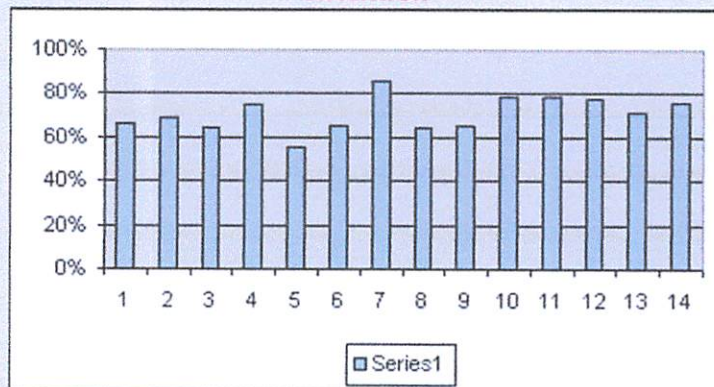


## ACE Neuro-Cognitive Research

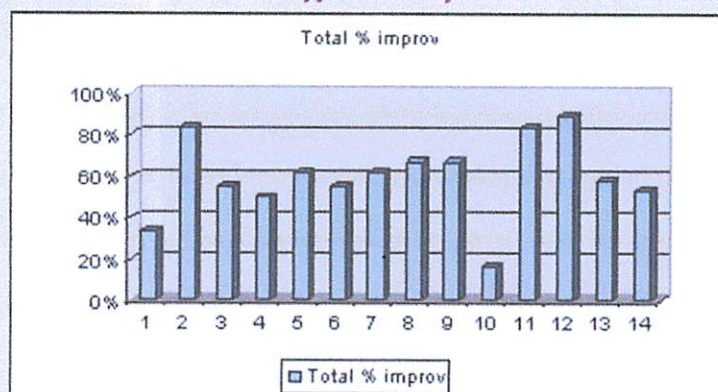
Follow up of 14 ADD/ADHD children ages 6 to 17

AGE/ GENDER	DIAGNOSIS	PRE	POST	WEEKS	IMPROVEMENT BASED ON SEPARATE ASSESSMENTS
6/M	ADD	43%	72%	12	Attention 66% Behavior 67% Hyperactivity 33% Academics 73% Overall 60%
7/M	ADD	63%	81%	18	Attention 68% Behavior 50% Hyperactivity 83% Academics 75% Overall 69%
7/M	ADHD	68%	89%	20	Attention 65% Behavior 61% Hyperactivity 56% Academics 81% Overall 65%
8/F	ADD/LD	23%	78%	23	Attention 75% Behavior 58% Hyperactivity 50% Academics 60% Overall 61%
8/M	ADHD	68%	90%	22	Attention 55% Behavior 65% Hyperactivity 62% Academics 64% Overall 61%
10/M	ADD/APD	43%	93%	20	Attention 65% Behavior 48% Hyperactivity 56% Academics 73% Overall 60%
10/F	ADHD	72%	94%	15	Attention 85% Behavior 56% Hyperactivity 62% Academics 89% Overall 73%
11/M	ADHD	79%	96%	18	Attention 65% Behavior 48% Hyperactivity 67% Academics 89% Overall 67%
12/F	ADD	67%	89%	14	Attention 65% Behavior 50% Hyperactivity 67% Academics 69% Overall 63%
13/F	ADD/LD	42%	87%	20	Attention 78% Behavior 50% Hyperactivity 17% Academics 89% Overall 58%
14/M	ADD/APD	49%	88%	22	Attention 78% Behavior 50% Hyperactivity 83% Academics 66% Overall 69%
16/F	ADHD	72%	92%	16	Attention 78% Behavior 88% Hyperactivity 89% Academics 90% Overall 86%
16/F	ADHD	81%	97%	12	Attention 71% Behavior 48% Hyperactivity 58% Academics 92% Overall 67%
17/M	ADHD	63%	92%	13	Attention 76% Behavior 61% Hyperactivity 53% Academics 61% Overall 65%

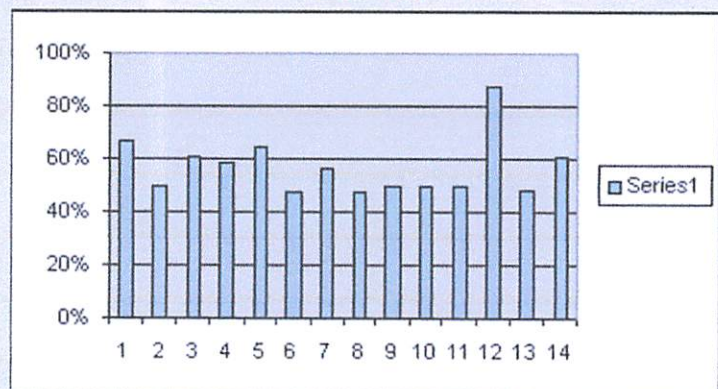
### Attention



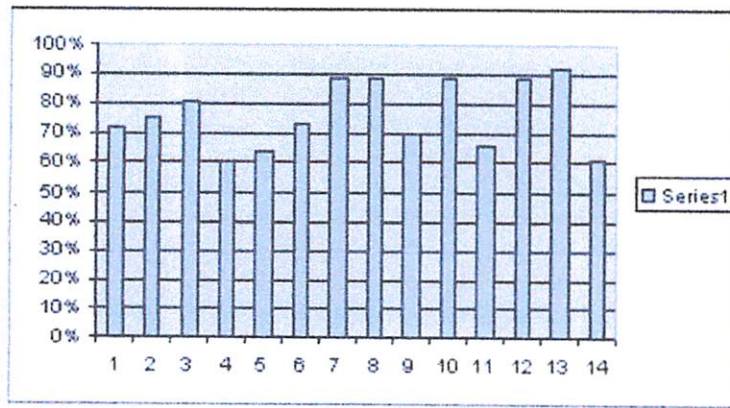
### Hyperactivity



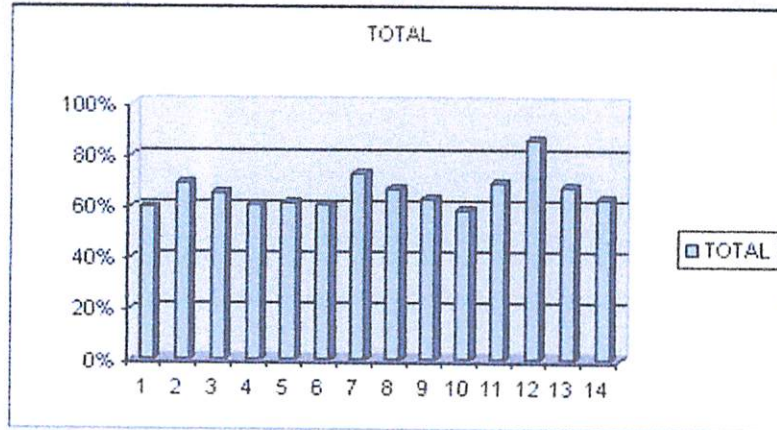
### Behavior



### Academics



Total



**Notes:**

1. PRE column represents the average score of one round using ACE neuro-cognitive training program.
2. POST column represents the last round completed.
3. Number of sessions varied between 3-5 training sessions a week.

**Summary**

1. ACE neuro-cognitive training program has proven very effective in treating attention deficit disorder.
2. There is a strong correlation between improvement in scores and improvement in symptoms.

**Adult Study**

A similar study with ADD/ADHD adults (soon to be published) is showing similar results.